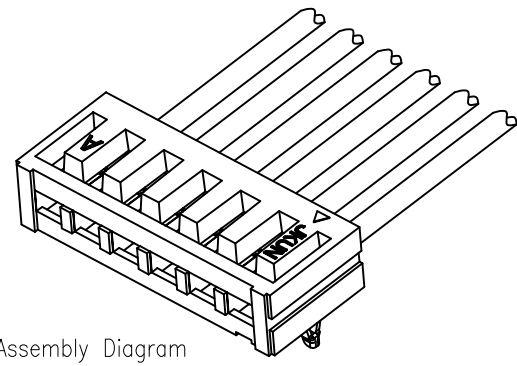
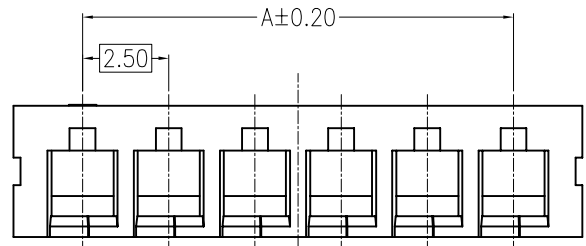
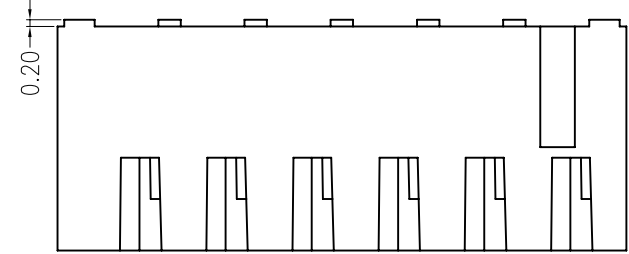
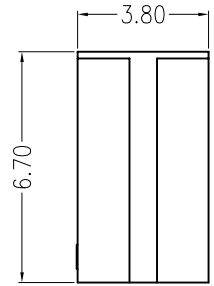
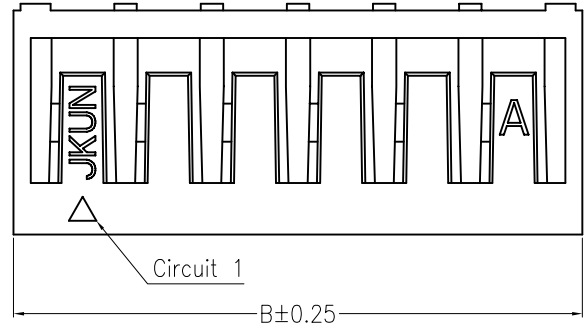
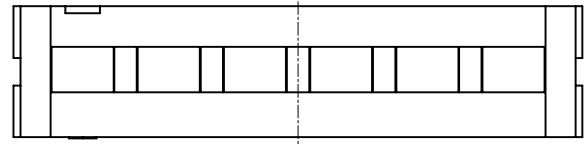


REV	DESCRIPTION	DESIGN	DATE
A	NEW RELEASE	Yonghai	2023/11/21

PIN.	Dimensions (mm)	
	A	B
02	2.50	6.50
03	5.00	9.00
04	7.50	11.50
05	10.00	14.00
06	12.50	16.50
07	15.00	19.00
08	17.50	21.50
09	20.00	24.00
10	22.50	26.50
11	25.00	29.00
12	27.50	31.50
13	30.00	34.00
14	32.50	36.50
15	35.00	39.00
16	37.50	41.50

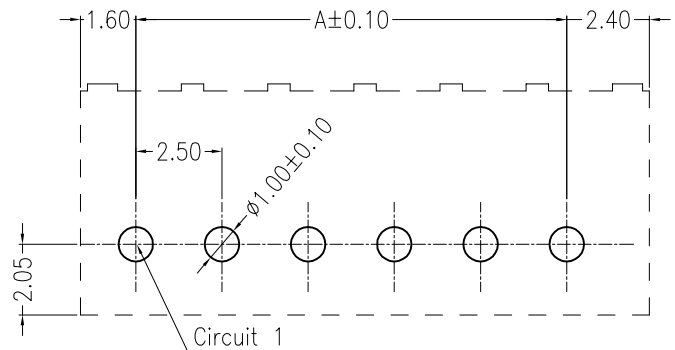
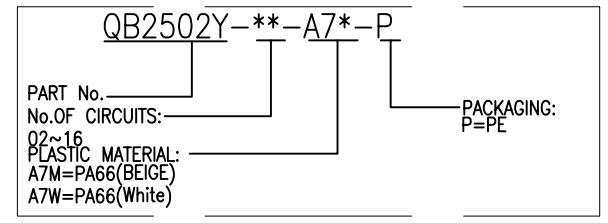


Assembly Diagram

Specifications:

- Housing: PA66 UL94V-0, BEIGE
- Rated voltage: 250V AC DC
- Rated current: 3.0A AC DC
- Contact resistance: ≤20mΩ
- Insulation resistance: ≥1000MΩ
- Withstand Voltage: 1000V AC/minute
- Temperature Range: -40°C ~ +125°C

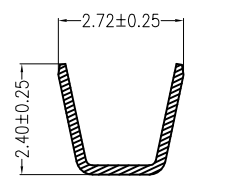
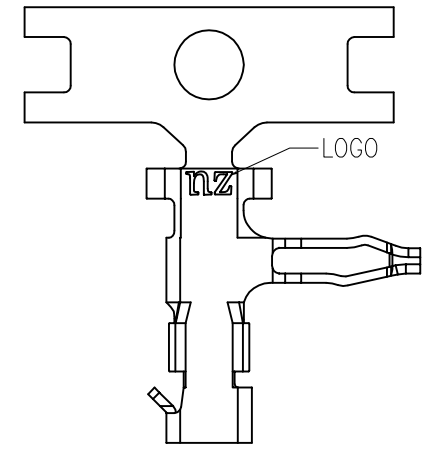
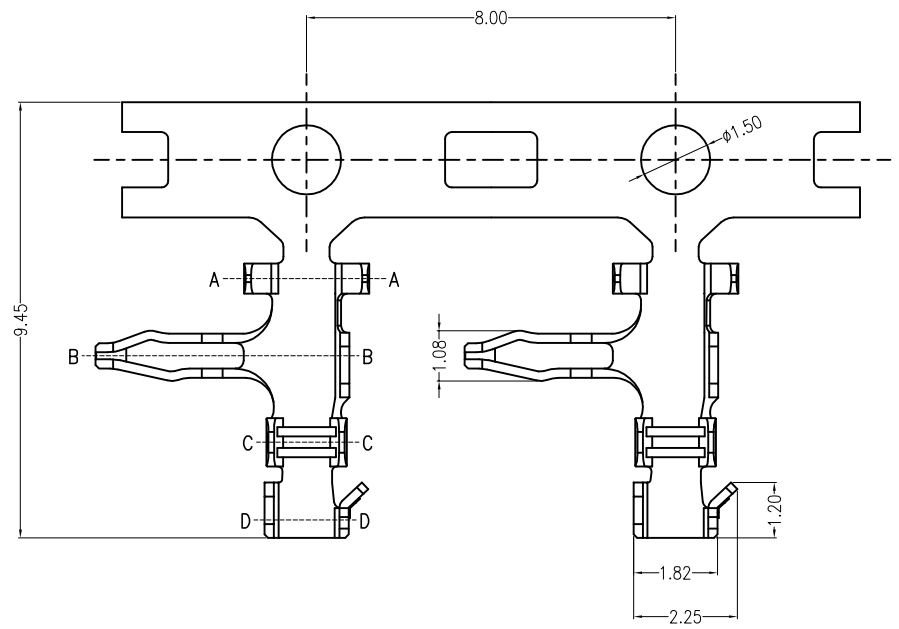
ORDER INFORMATION:



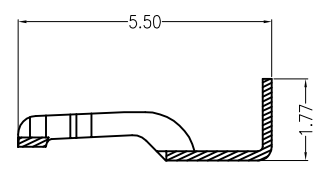
**SUGGESTED PCB LAYOUT
(COMPONENT SIDE)**

JKUN 温州健坤接插件有限公司 WENZHOU JKUN CONNECTOR CO.,LTD.		TITLE: 2.50mm PITCH Housing	
GENERAL TOLERANCE		USE: CUSTOMER	PART NO.:
X.X ±0.30	X. ±5°	APPD: Yaojianjun	QB2502Y-**-A7*-P
X.XX ±0.20	X.X ±2°	CHKD: Yanpeng	DWG NO.:
X.XXX ±0.10	X.XX ±1°	DR: Chengyonghai	JKUN-GCKH-1594
UNITS: mm		SCALE 1 : 1	SHEET 1 / 1

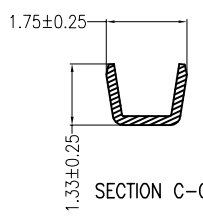
REV	DESCRIPTION	DESIGN	DATE
A	NEW RELEASE	Lingqing	2023/02/02



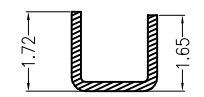
SECTION A-A



SECTION B-B



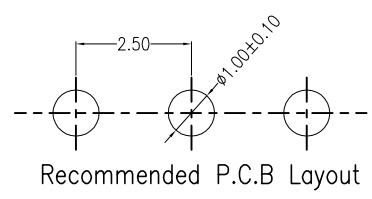
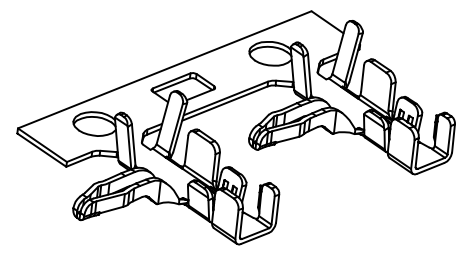
SECTION C-C



SECTION D-D

Specifications:

- Contact resistance: $\leq 20m\Omega$
- Insulation resistance: $\geq 1000M\Omega$
- Rated voltage: 250V AC DC
- Rated current: 3.0A AC DC
- Withstand Voltage: 1000V AC/minute
- Temperature Range: $-40^{\circ}C \sim +125^{\circ}C$



Ordering Information & Specification:

Part No	Wire Range	Insulation O.D.	Material	Finish	Qty/Reel
QB2502T-01	AWG#24~#22	1.60mm(max)	Phosphor bronze	Tin-plated	9000PCS

JKUN 温州健坤接插件有限公司 WENZHOU JKUN CONNECTOR CO.,LTD.		TITLE: 2.50 Terminal	
GENERAL TOLERANCE		USE: CUSTOMER	PART NO.:
X.X ±0.30	X. ±5'	APPD: Zhuzhigang	QB2502T-01
X.XX ±0.20	X.X ±2'	CHKD: Zenglingqing	DWG NO.:
X.XXX ±0.10	X.XX ±1'	DR: Jiangjianying	JKUN-GCDZ-0123
UNITS: mm		SCALE 1 : 1	SHEET 1 / 1